

- 1
- 2
- 3
- 4
- 5
- 6
- 7
- 8
- 9
- 10**
- 11
- 12
- 13
- 14
- 15

**MATERIAL**

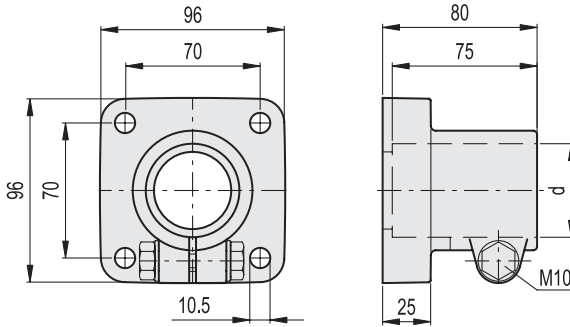
Glass-fibre reinforced polyamide based (PA) technopolymer, black colour, matte finish.

**STANDARD EXECUTIONS**

- **TTA-A**: zinc-plated steel M10 screw, nut and washer.
- **TTA-SST**: AISI 304 stainless steel M10 screw, nut and washer.

**FEATURES**

Maximum tightening torque for screw assembly 35 Nm.



**Conversion Table**  
1 mm = 0.039 inch

| d    |      |
|------|------|
| mm   | inch |
| 48.3 | 1.90 |

**TTA-A**

INOX STAINLESS STEEL | METRIC

| Code   | Description | d Tube (mm) | d Tube (BSP/GAS) | ⚖   |
|--------|-------------|-------------|------------------|-----|
| 419650 | TTA.48-A    | 48.3        | 1"1/2            | 260 |

**TTA-SST**

INOX STAINLESS STEEL | METRIC

| Code   | Description | d Tube (mm) | d Tube (BSP/GAS) | ⚖   |
|--------|-------------|-------------|------------------|-----|
| 419651 | TTA.48-SST  | 48.3        | 1"1/2            | 260 |

Levelling elements and supports